

## About Sentinel

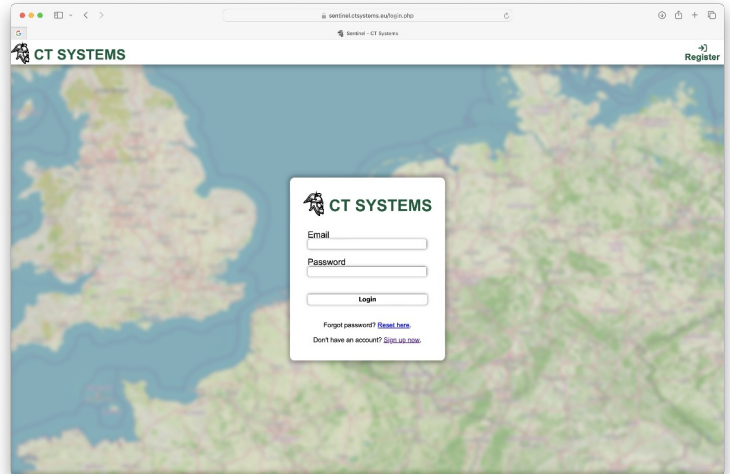
Sentinel is our online cloud platform for monitoring live locations and live process information of your Viking systems and further mobile I/O devices in the field.

Sentinel also functions as a collection database where all live data will be stored for feature review, and for creation of automated reports. Sentinel is accessible using any web browser, simply create a new account and we will add your Viking systems and device to your account.

The live information a Viking system can send to Sentinel can be greatly expanded by utilising the extensive communication options of Viking.

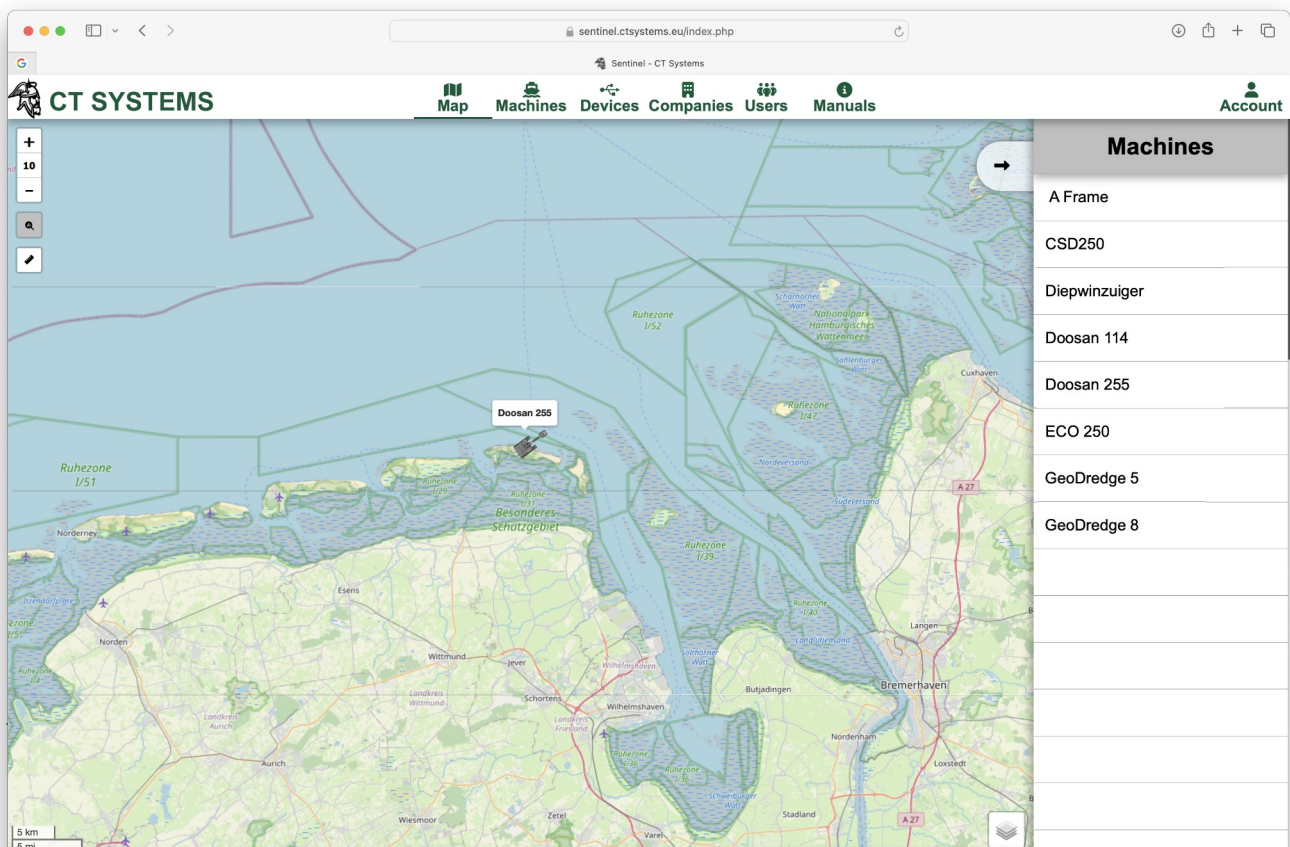
Viking can communicate virtually any industrial protocol so it can collect and relay data for Sentinel, of for example PLC's or HMI's over a CAN-bus, Modbus, or over a RS232, RS485, TCP, UPD, or 4-20 mA connection.

This document serves as a short introduction to the capabilities of Sentinel. Many more is possible and more features are in the works.



## Live Position Information

Once logged in you will be presented with an overview of all active machines and devices on a map. By pressing the arrow on the top right of the screen the righthand side bar will be opened and will present a list with all your machines currently online.

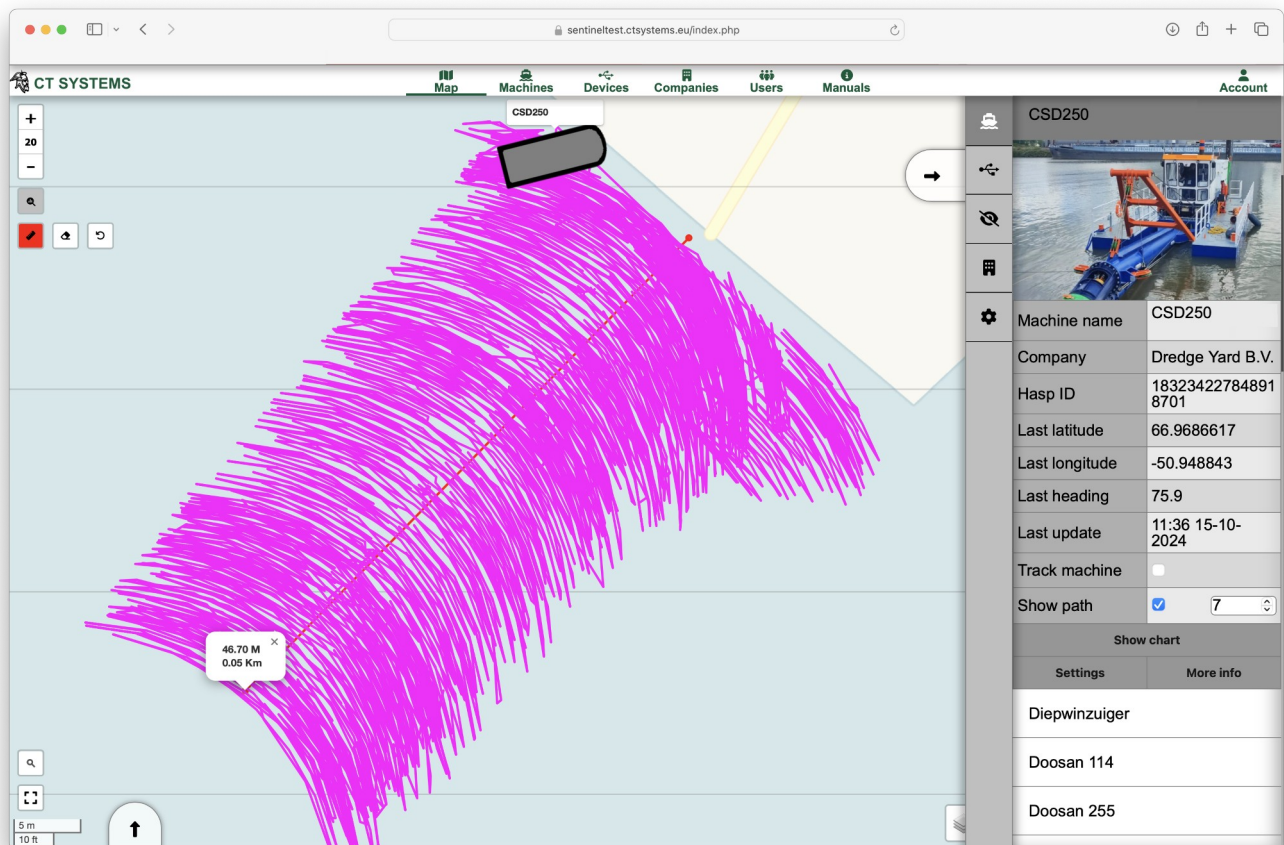


## Machine Information

To see more information of a machine you can click on it on the live map, or click on it in the righthand sidebar. The basic information of the machine will be shown on the right along with a few options.

By selecting the “*Track Machine*” checkbox the machine will be kept in the centre of the screen while it is sailing along. To view a location history select “*Show Path*” and enter the number of days you want to look back.

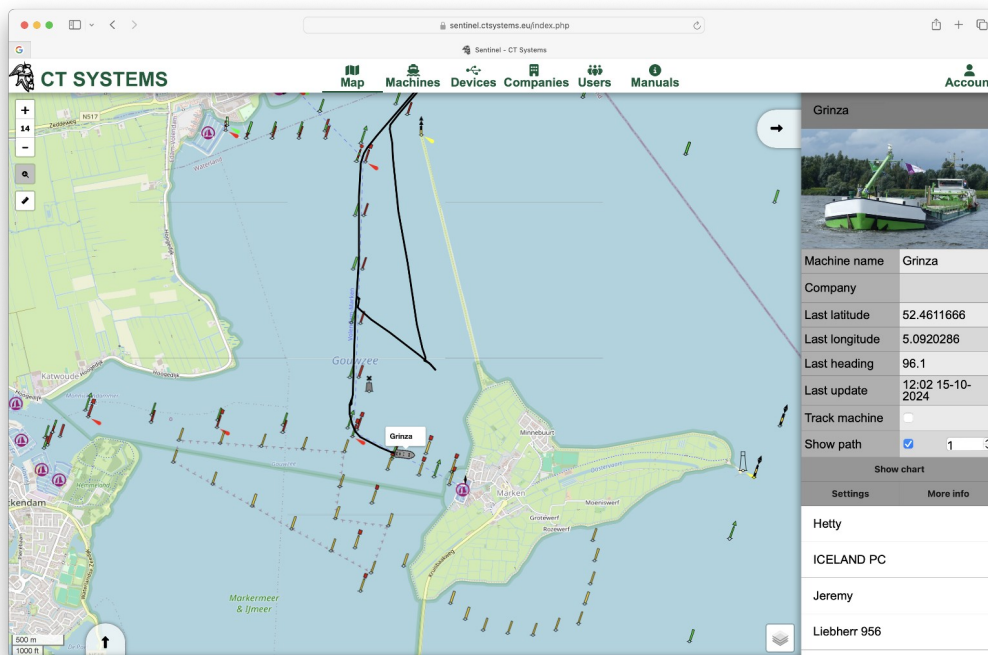
In this example picture below a track of a cutter suction dredger is shown, where the measure tool in the top left is used to measure the dredging progress over the last few days.



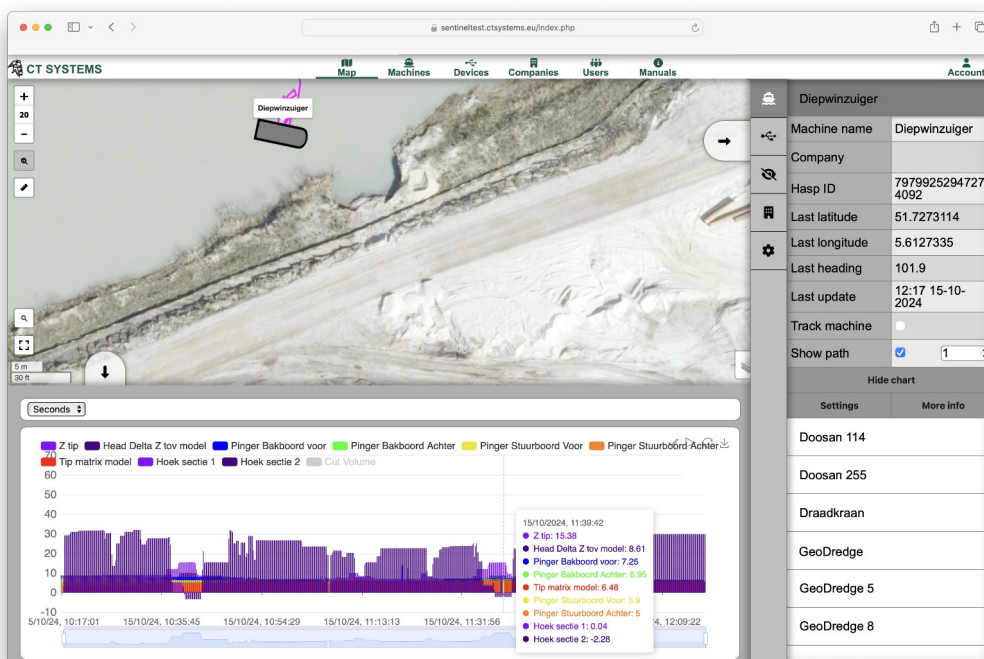
The screenshot displays the Sentinel web interface. The main map shows a purple track of a cutter suction dredger (CSD250) moving across a body of water. A measurement tool in the top left corner indicates a distance of 46.70 M (0.05 Km). The sidebar on the right provides detailed information for the selected machine:

CSD250	
Machine name	CSD250
Company	Dredge Yard B.V.
Hasp ID	183234227848918701
Last latitude	66.9686617
Last longitude	-50.948843
Last heading	75.9
Last update	11:36 15-10-2024
Track machine	<input type="checkbox"/>
Show path	<input checked="" type="checkbox"/> 7
Show chart	
Settings	More info
Diepwinzuiger	
Doosan 114	
Doosan 255	

The picture below shows the track of a ship over the last day. In this picture the extra Open Sea Map layer is also enabled.

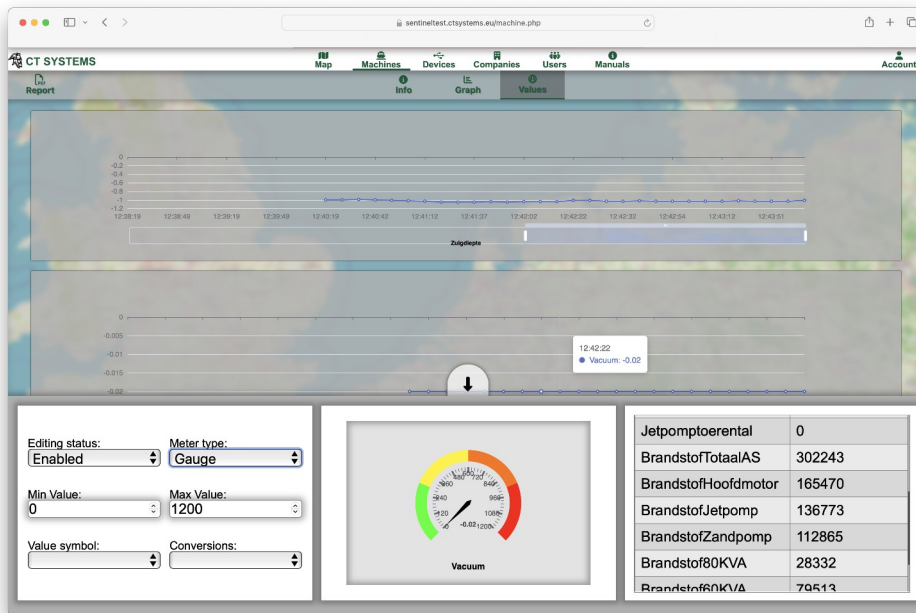


By clicking the arrow in the bottom left the bottom bar will open. Depending on the information available on the Viking system on board, and depending on which data is selected to be forwarded to Sentinel, a graph will be shown with selected machine information. Values can be turned on and off with a mouse click and by hovering your mouse over the data the values of that moment will be shown.



## Detailed Machine Information & Reporting

To get more information of a machine you can select it from the right hand side bar and select “More Info”. Here an overview of the machine is presented including a map view of the live position. Then there is an option to view a customisable dashboard of the machine which can be configured to your exact likings, and will be fed with live data of the machine as shown in this basic example below.



Another option is to select the “Report” option in the top left of the machine page, here several options are presented to create an automated PDF report of the machines history

